

AI-Powered

Smart City Ecosystem



All rights reserved by Zenopix



Anemometer Module

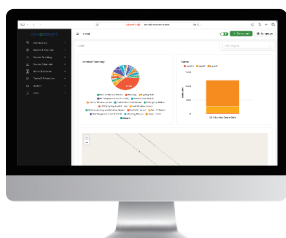
ZS-AM01

An anemometer is a measuring device used to accurately measure wind speed and direction. It is one of the essential instruments in meteorological stations for weather monitoring. It also provides important contributions to safety and efficiency in fields such as agriculture, construction, and maritime.

By measuring wind speed, it helps optimize water usage in agricultural applications and improve sprinkler systems. Powered by a 3.6V 19Ah battery, it transmits data via LoRaWAN Gateway. Data can be monitored from the IoT server, and transmission frequency is adjustable. With low power consumption, you can manage agricultural fields and soil moisture over wide areas.

Communication Range	2500m ¹
Sensor Features	Wind Speed: 0–30 m/s, 0–60 m/s
Power	3.6V 19000mAh
Frequencies	EU433 – KR920 – US915 / EU868 – AS923 – AU915
Connections	LoRaWAN ¹ Bluetooth ²
Monitoring	Web and Mobile-Based Remote Monitoring
Dimensions	(WxDxH): 154 x 67 x 60 mm

1. The range may vary depending on the gateway antenna gain and geographic conditions.
2. Bluetooth is offered as an optional feature based on preference.



You can manage meteorological monitoring through our online management platform at zenosmart.com or via your own servers.

Installation

The anemometer sensor connects to the nearest LoRaWAN gateway once the battery is installed and starts sending data to the IoT server. Operating temperature range: -20°C to

Usage

The sensor offers IP67 waterproof protection and a lifespan of up to 10 years, depending on usage. It provides LoRaWAN wireless communication range of up to 2.5 km.